

# State of Wyoming Corner Record

(In compliance with the **CORNER PERPETUATION AND FILING ACT**, Wyoming Statutes, 1997 Section 33-29-140 et. seq., and the Rules and Regulations of the Board of Professional Engineers and Professional Land Surveyors)

Reverse side of this form may be used if more space is needed.

Record of original survey and citation of source of historical information (if corner is lost or obliterated). Description of corner monumentation evidence found and/or monument and accessories established to perpetuate the location of this corner. Sketch of relative location of monument, accessories, and reference points with course and distance to adjacent corner(s) (if determined in this survey). Method and rationale for reestablishment of lost or obliterated corner.

**G.L.O. RECORD:**

VA.15°47'E

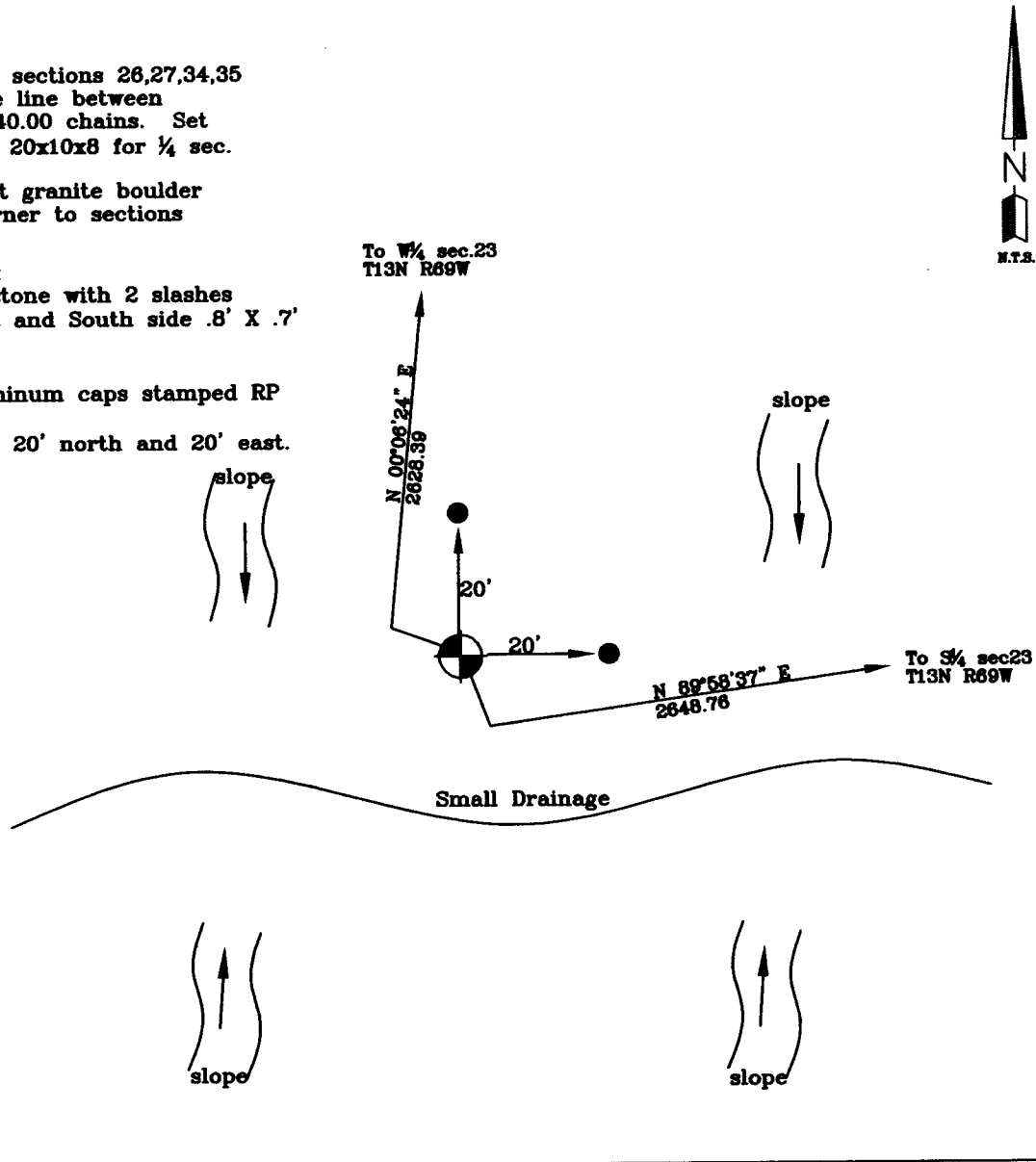
From corner of sections 26,27,34,35 north along the line between sections 26,27 40.00 chains. Set granite boulder 20x10x8 for 1/4 sec. cor.

80.00 chains set granite boulder 20x12x8 for corner to sections 22,23,26,27.

**AT THE CORNER:**

Found granite stone with 2 slashes chiseled in East and South side .8' X .7' X 1.0'

Set two 2" Aluminum caps stamped RP on 5/8" x 24" rebar, 20' north and 20' east.



Date of Field Work: 9/13/07

Office Reference: GRAHAM

**Cross Index Plat**

	1	2	3	4	5	6	7	8	9	10	11	12	13	14	15	16	17	18	19	20	21	22	23	24	25		
A																											A
B																											B
C		6																								C	
D																										D	
E																										E	
F																										F	
G																										G	
H																										H	
J																										J	
K																										K	
L																										L	
M																										M	
N																										N	
O																										O	
P																										P	
Q																										Q	
R																										R	
S																										S	
T																										T	
U																										U	
V																										V	
W																										W	
X																										X	
Y																										Y	
Z																										Z	
	1	2	3	4	5	6	7	8	9	10	11	12	13	14	15	16	17	18	19	20	21	22	23	24	25		

**Firm/Agency, Address**

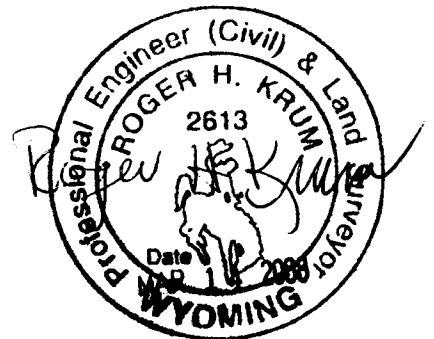
Western R&D, Ltd.  
 5809 Yellowstone Rd., Suite B  
 Cheyenne, Wyoming 82009

This corner record was prepared by me or under my direction and supervision.

**SEAL & SIGNATURE**

Telephone Number: (307) 632-5656

● Found stone, left in place



Corner Name North West Corner Section 26, T 13 N, R 69 W, 6th P.M.

Cross-Index No.: R-17

County: Laramie Wyoming

SBRPEPLS/PLSW: March 1994; PLSW January 1998